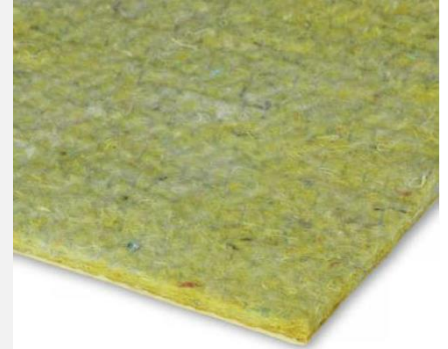


TECSOUND FT

TECSOUND FT is a soundproofing complex. The upper face consists of a TECSOUND synthetic and viscoelastic, polymer based, bitumen-free high density membrane. The lower face is coupled with a porous mineral wool. The combination of TECSOUND with the mineral wool provides excellent acoustic properties in various parts of the construction.

ADVANTAGES

- High sound-insulation when combined with light and rigid elements such as gypsum boards.
- Flexible and adaptable to uneven surfaces.
- Good behaviour at low temperatures, without breaking or cracking.
- Easy to handle and cut.
- Ageing resistance.
- Rot proof.



APPLICATIONS

- Sound insulation of ceilings and vertical partition walls, where excellent sound insulation against the transmission of airborne noise is required.
- Recommended in partition and retention walls.
- Reduction of contact noise in concrete floors, applied under the screed.
- Suitable in new constructions and renovation.
- Can be used on all common surfaces (plaster, metal, wood, brick, concrete, ...).



INSTALLATION

CONDITIONS:

Substrate and/or ambient temperature: min. +5 °C to max. +35 °C.

The substrate must be dry, clean, free from dust and free from elements that could damage the membrane.

INSTALLATION:

The membrane can be fixed mechanically or by glueing.

a) Glueing

Apply a layer of contact adhesive on both the substrate and the mineral wool side of the complex. Follow the adhesive manufacturers instructions.

Install the complex and apply firm pressure with a rubber roller to achieve good adhesion and prevent blistering.

b) Mechanical fixing

The product can also be fixed mechanically (wall fasteners: 4 pcs/m², ceilings: 5 pcs/m²). Use synthetic insulation plugs like TECSOUND PT-H.

In case thickenings are not required, the complex is installed without overlap (with butt joint). Join the edges tightly and seal with TECSOUND S50 BAND.

In all other cases, a minimum overlap of 50 mm must be provided. Overlaps are sealed with adhesive or tape.

Make sure that there are no openings as these will have a negative effect on the noise reduction capacity.

Contact the manufacturer in case of technical questions.

PACKAGING AND STORAGE

	TECSOUND FT 40	TECSOUND FT 55	TECSOUND FT 75	
Mass (kg/m ²)	4,1	5,6	7,6	
Thickness (mm)	12,0	12,5	14,0	
Length (m)	6,0	5,5	5,5	
Width (m)	1,20	1,20	1,20	0,60
m ² /roll	7,2	6,6	6,6	3,3
Rolls/pallet	12	12	12	24
m ² /pallet	86	79	79	79

The product is supplied on a roll with cardboard core and individual protective cover.

Store the rolls horizontally on pallets in its original packaging, protected from moisture, sunlight and heat at a temperature of max. +35 °C. Do not stack the pallets on top of each other. The rolls have a shelf life of 1 year.

In cold periods, installation can be facilitated by allowing the product to stand at +2 °C for at least 5 hours before use.

CHARACTERISTICS

Technical properties	Standard	Value	Unit
Density (TECSOUND)	-	2010	kg/m ³
Density (mineral wool)	-	60	kg/m ³
Tensile strength	NT-67	> 30	N/50 mm
Compressive strength at 10 % deformation	ISO 3386-1	0,06	kPa
Compressive strength at 25 % deformation		6	
Resistance to tearing (nail shank)	EN 12310-1	153-235	N/50 mm
Thermal conductivity (mineral wool)	EN 12667	0,034	W/(m °C)
Young module (E)	-	1,35637 x 1,1744	MPa
Poisson coefficient	-	0,23	-
Service temperature	-	-10 up to +70	°C

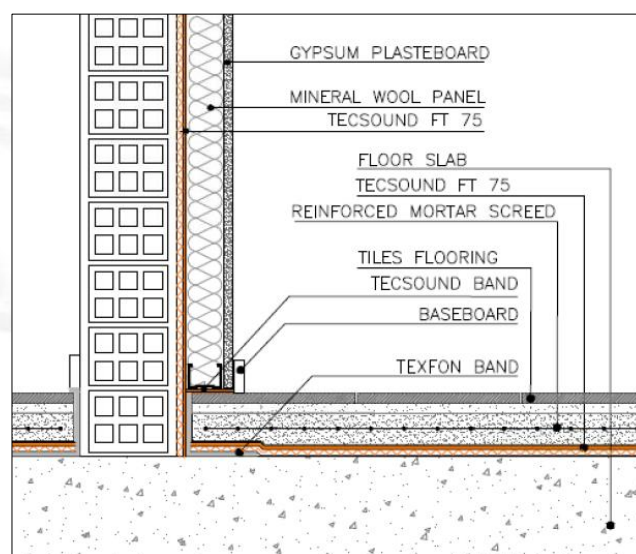
SOUND REDUCTION

Characteristics TECSOUND FT 75	Standard	Value	Unit
R _w (weighted sound reduction index)	EN ISO 140-3	28	dB
ΔL _w (Impact sound insulation)	EN ISO 140-8	22	dB

Example of sound insulation for a masonry wall with retention wall

Frequency (Hz)	R _w (with TECSOUND FT) (dB)	R _w (without TECSOUND FT) (dB)
125	40,1	32,9
250	47,7	33,5
500	52,7	41,4
1000	60,1	51,2
2000	64,6	61,3
4000	82,1	68,6
R_w (weighted sound reduction index)	58,0 dB	46,0 dB

Testing according to EN ISO 10140-2



SPECIAL INDICATIONS

Hygiene, Health and Environment

The product does not contain any substance which is likely to be detrimental to your health or to the environment and complies with generally admitted Health and Safety Requirements.

Quality-, Environment- and Safety Management

SOPREMA always recognises as a high level of importance the quality of the products, the environment and safety. For this reason, we operate independently monitored Quality and Environment Assurance Systems in line with **EN ISO 9001** and **EN ISO 14001**.